

Host your events  
at **Jameel Arts Centre**,  
Dubai's contemporary  
art museum

# Content

---

<b>About</b>	<b>3</b>
<b>Architecture and Gardens</b>	<b>8</b>
<b>Venues at Jameel Arts Centre</b>	<b>10</b>
<b>Available Services</b>	<b>28</b>
<b>Packages</b>	<b>30</b>
<b>Collaboration Terms</b>	<b>31</b>
<b>Contact</b>	<b>34</b>

---

# About



# About

Established in 2003, Art Jameel is an independent organisation that supports artists and creative communities.

Art Jameel's two institutions – Jameel Arts Centre, an innovative contemporary institution in Dubai, UAE, and Hayy Jameel, a dedicated complex for the arts and creativity in Jeddah, Saudi Arabia, offer programmes across exhibitions, commissions, research, learning and community-building in order to promote contemporary art and creative entrepreneurship across the Middle East and beyond.



Jameel Arts Centre, Dubai



Hayy Jameel, Jeddah

# Venue Hire at Jameel Arts Centre

Known as Dubai's contemporary art museum, Jameel Arts Centre is a hub for exhibitions, commissions, events and learning programmes for all the community. Designed by UK-based Serie Architects with Dubai-based waiwai as consultant architects, Jameel Arts Centre offers contemporary event spaces with varying sizes, allowing for flexible and creative configurations.

Spaces are available throughout the year; our experienced and dedicated team supports the design and execution of events and helps adapt the centre to your requirements.

Hosting an event at Jameel Arts Centre is a wonderful opportunity to demonstrate your support for the arts while providing an enriching experience for your guests. Overlooking the breathtaking views of both the Jaddaf Creek and the Jaddaf Waterfront Sculpture Park – the UAE's first open-air art and sculpture park – Jameel Arts Centre was designed with the intent to balance the rippling water with the stacked geometry of the architecture. The result, a fluid and easily navigated criss-cross of paths, that reflects a hidden geometry that both defines distinct zones and builds an organic flow.





# Partners and Collaborators



DELFINA  
FOUNDATION

V&A

THE  
MET

marie claire

RALPH LAUREN

Van Cleef & Arpels

HERMÈS  
PARIS

Cartier

X

miu miu

OUNASS



الجناح الوطني لدولة الإمارات  
بينالي البندقية  
National Pavilion UAE  
La Biennale di Venezia

Community  
Jameel



MIT ENTERPRISE  
FORUM



J-PAL  
ABDUL LATIF JAMEEL POVERTY ACTION LAB

بلدية دبي  
DUBAI MUNICIPALITY

أمانة  
جدة  
Jeddah Municipality

Emirates  
EMIRATES AIRLINE  
FESTIVAL OF  
LITERATURE

DUBAI  
HOLDING

ITP | MEDIA  
GROUP

SOLE

LES BENJAMINS

adidas

# Architecture and Gardens



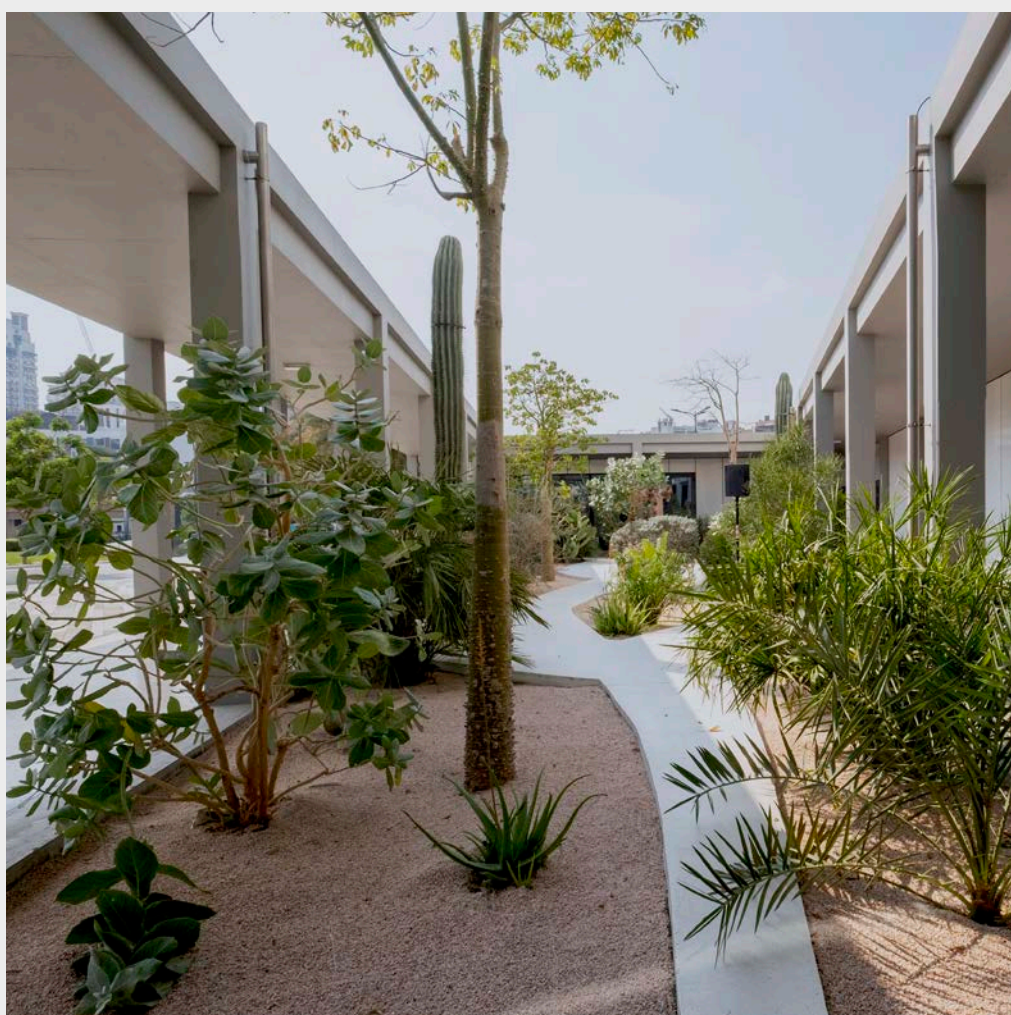


The architecture is influenced by the building's position on Dubai Creek, and includes a subtle play on interior and exterior spaces, aiming to maximise a sense of openness and accessibility.

Multifunctional in its design, the building is conceived as a series of boxes of varying dimensions that are bound together by a one-storey colonnade. While the colonnade and courtyard-style gardens draw on the rich architectural traditions of the region, the building is resolutely contemporary and clad in shimmering white aluminium, contrasting with grey fairface concrete pillars and black terrazzo walkways.

Each garden has a particular design and character, and each represents a distinct desert environment, named after a country, region or particular species: Namib, Socotra, Chihuahuan, Australian, Silk Floss, Arabian, and Spiny Woodlands. Each of the seven gardens features a collection of sculptural plants native to the world's varying desert ecosystems. Rare plants, such as dragon blood, adenia ocotillo and turtle plants, as well as more familiar plants, including fan aloe and marble cactus, make up a few of the 149 varieties featured.

Light is funneled into the spaces through seven gardens designed by renowned landscape architect Anouk Vogel. These open-air courtyards punctuate the building, reset the mind, and allow art, books and the community to directly interact with flora and the outdoor.



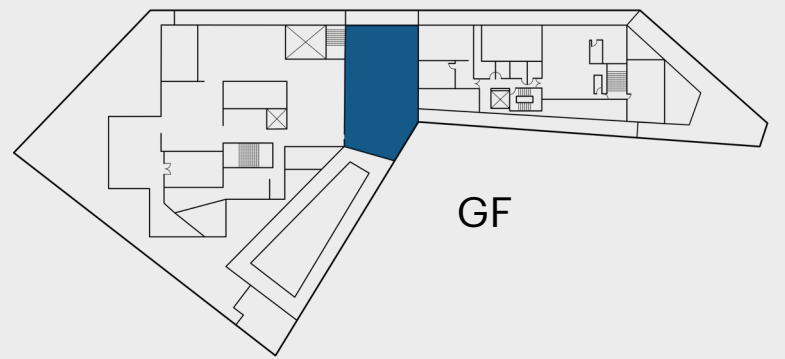
# Venues at Jameel Arts Centre



# Lobby

The Lobby is an open space with floor to ceiling windows overlooking the Jaddaf Waterfront Sculpture Park and Marina on one side, and Dubai Creek on the other.

This space is ideal for a range of larger indoor gatherings including cocktail receptions, seated dinners or conferences.



Venue Rates		Estimated Capacity	
Hourly Rate	N/A	Venue Size	254 sqm
Half Day Rate	36,000 AED	Standing Capacity	300*
Full Day Rate	70,000 AED	Seated Capacity	90*

\* Capacity can be adjusted according to desired setup  
 \* Option to privatise Lobby is assessed on a case by case basis



Equipped with

- 6-screen Full HD video wall grid (3x2)
- 6 floor sockets connected in a loop to a 32-ampere breaker
- 2 extension cables (4mm, 3-core) each connected to a 20-ampere breaker

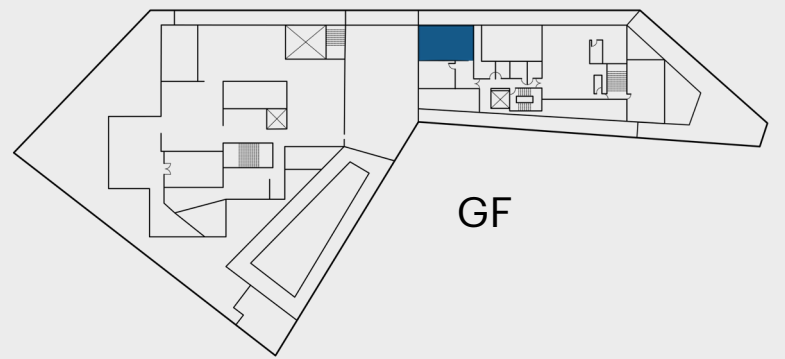
# Lobby



# Project Space

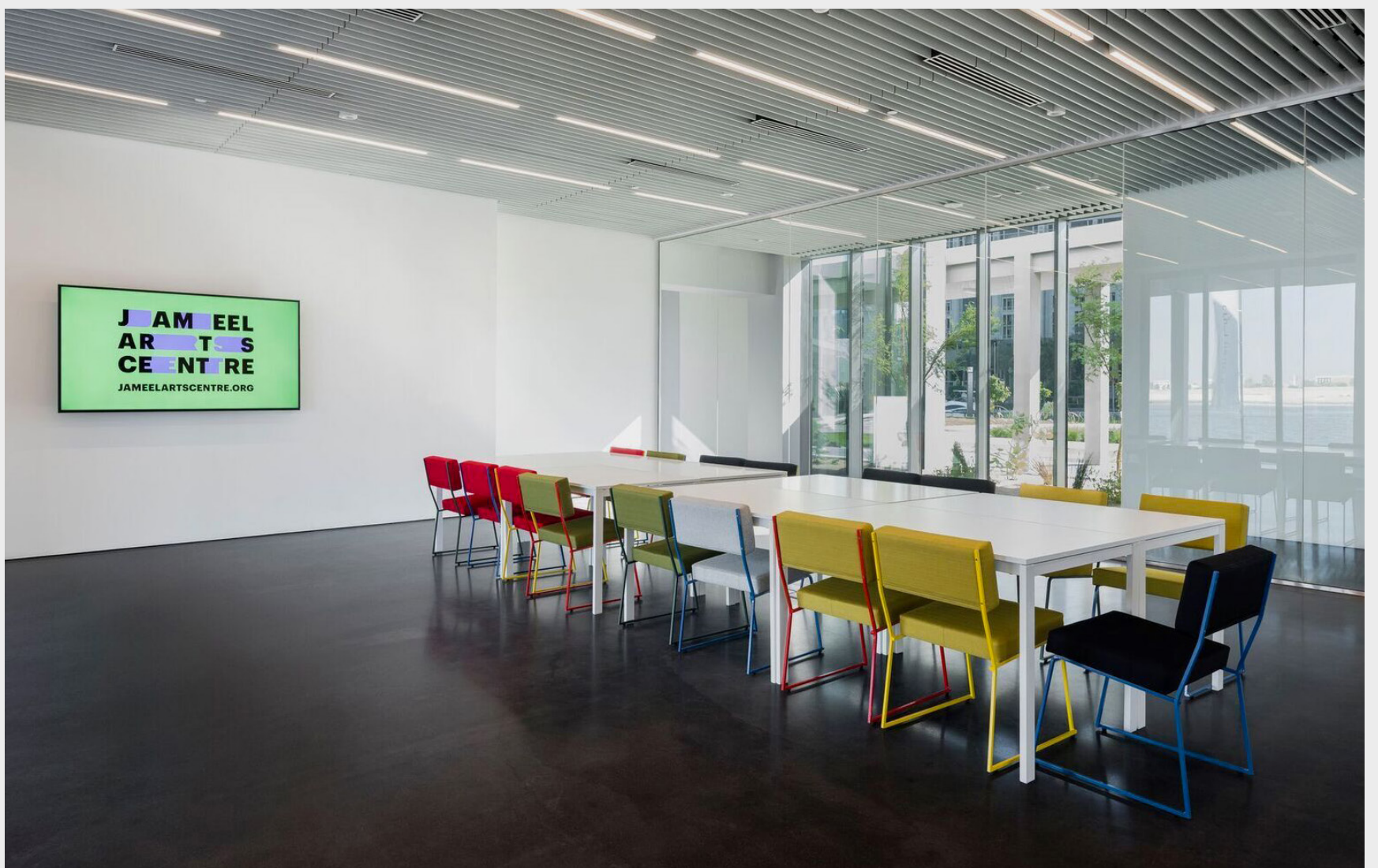
The Project Space is a brightly lit and versatile space located at the heart of the Centre, attached to the Lobby and opening onto the Creek.

The space sparks creativity and discussion and is suitable for meetings, workshops and breakout sessions. It can also be combined with the Lobby or Roof Terrace for a dedicated catering space and has easy alternate access through the colonnade.



Venue Rates		Estimated Capacity	
Hourly Rate	2,000 AED	Venue Size	68 sqm
Half Day Rate	6,000 AED	Standing Capacity	60*
Full Day Rate	10,000 AED	Seated Capacity	30*

\* Capacity can be adjusted according to desired setup



Equipped with

- 4 Bose FreeSpace DS 40F ceiling speakers, Barco ClickShare Wireless Presenter, Wall mounted professional 75" 4K TV with HDMI input, ceiling mounted projector with a 2 metre wide screen
- 4 floor sockets connected in a loop to a 32-ampere breaker
- 6 wall sockets connected in a loop to a 32-ampere breaker

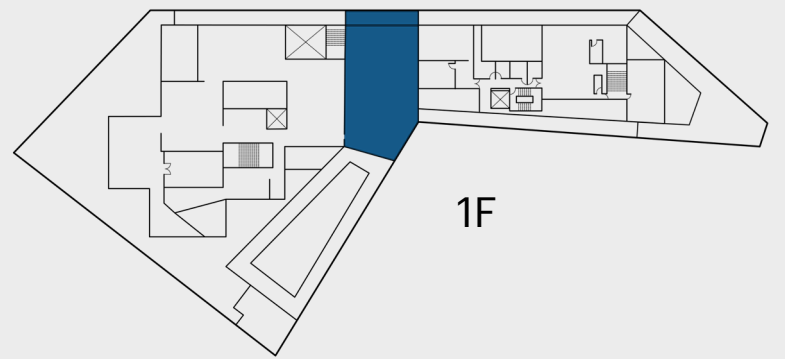
# Project Space



# Rooftop Terrace

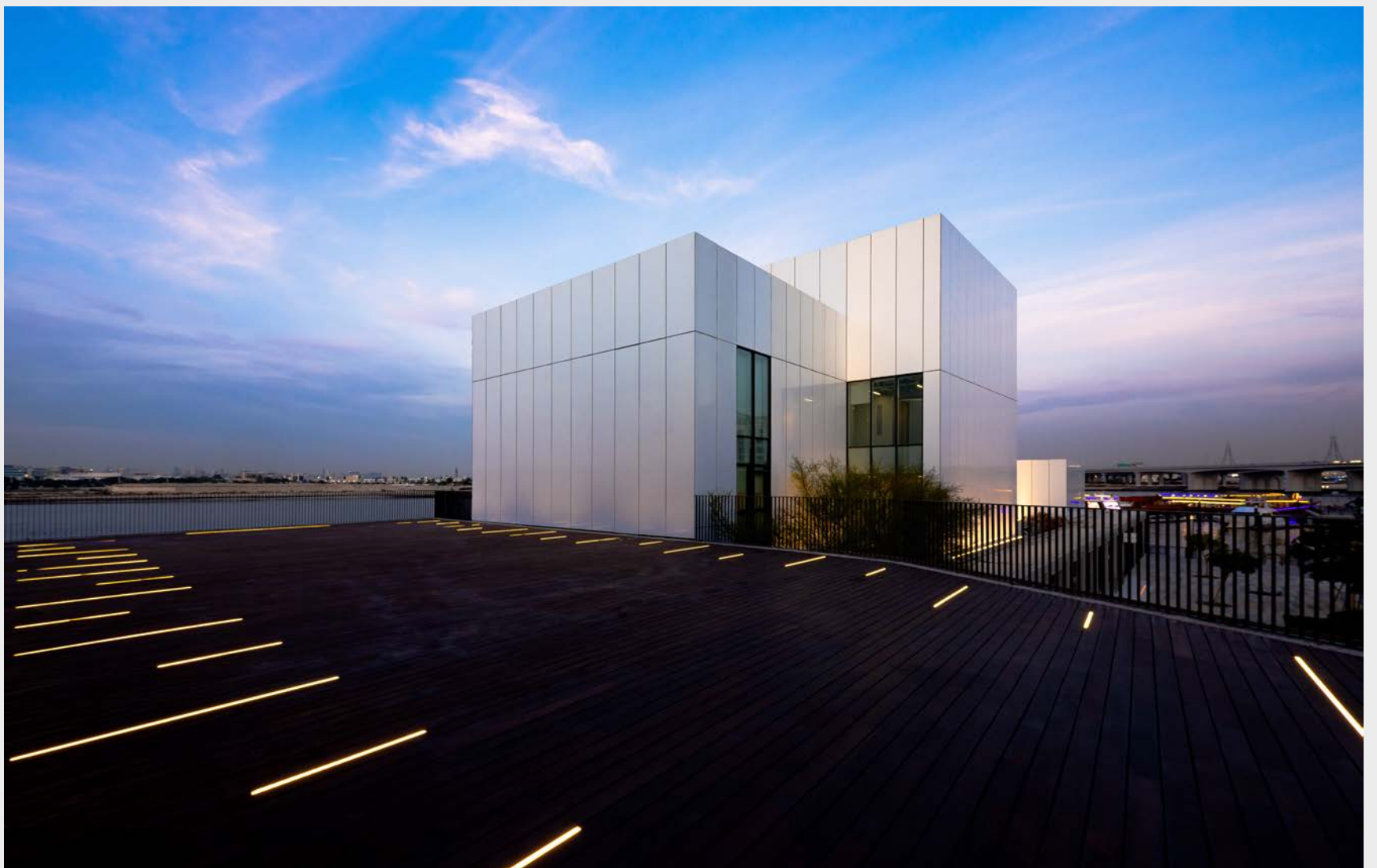
A stunning outdoor space with uninterrupted views of Dubai Creek, offering a different experience from day to night.

The space is ideal for larger outdoor gatherings, sundowner cocktail receptions, film screenings or yoga.



Venue Rates		Estimated Capacity	
Hourly Rate	5,000 AED	Venue Size	200 sqm
Half Day Rate	20,000 AED	Standing Capacity	300*
Full Day Rate	38,000 AED	Seated Capacity	90*

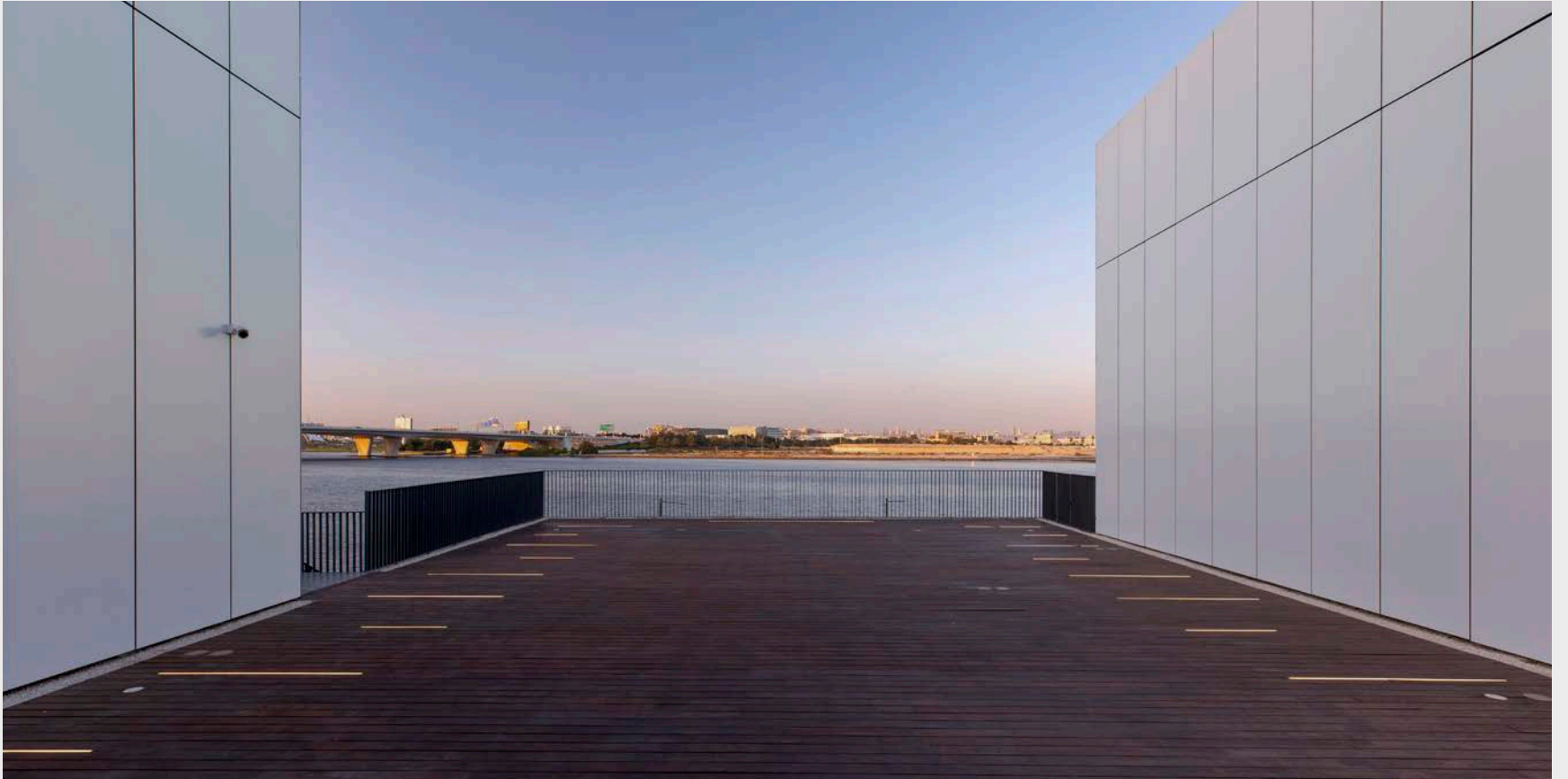
\* Capacity can be adjusted according to desired setup



Equipped with

- 8 floor sockets connected in a loop to a 32-ampere breaker
- 2 extension cables (4mm, 3-core) each connected to a 20-ampere breaker
- 1 extension cable (4mm, 3-core) connected to a 32-ampere breaker

# Rooftop Terrace





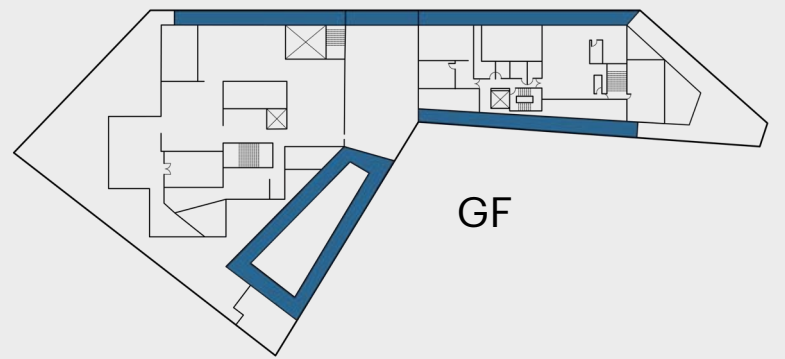


# Colonnade

The warmly lit colonnade provides a shaded outdoor corridor wrapped around the building with creek-side or park-side views.

Combine with Lobby for an outdoor extension, or the Rooftop Terrace as a pre-function area nestled between Jameel Arts Centre and Dubai Creek.

\*Combined hire with *Lobby* or *Roof Terrace*



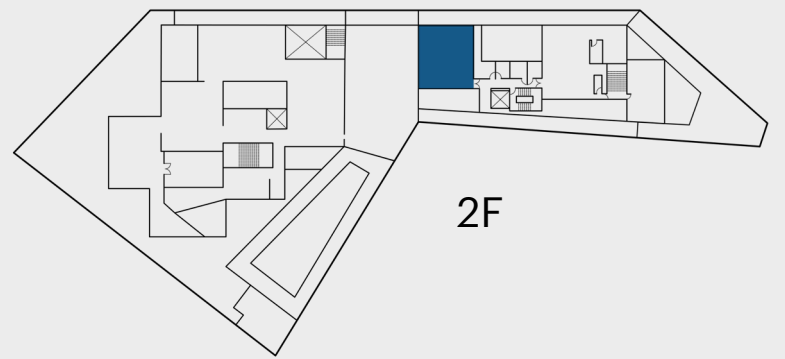
# Colonnade



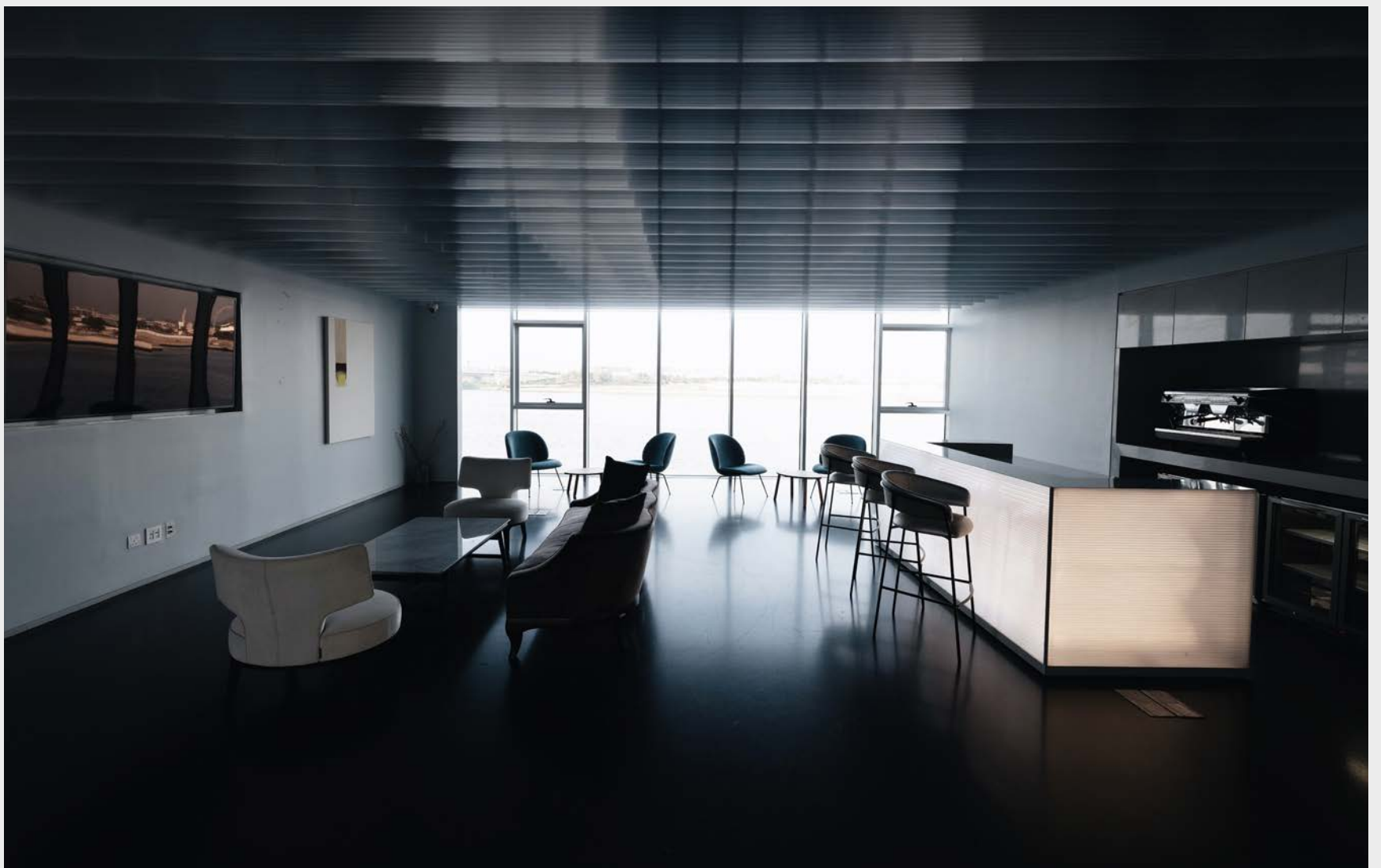
# Sahaab

Sahaab is located on the private top floor, with panoramic views of Dubai Creek.

This stunning room is ideal for meetings, workshops, breakout sessions or intimate dinners and receptions. It can also be combined with other spaces as a lounge or green room, and includes a private pantry and bathroom.



Venue Rates		Estimated Capacity	
Hourly Rate	3,000 AED	Venue Size	85 sqm
Half Day Rate	10,000 AED	Standing Capacity	80
Full Day Rate	16,000 AED	Seated Capacity	50



- Equipped with
- Moveable bar
  - Motorised shear and blackout blinds
  - Wall mounted professional 75" 4K TV with HDMI input
  - 3 floor sockets connected connected in a loop to a 20-ampere breaker
  - 5 floor sockets connected in a loop to a 32-ampere breaker
  - 3 wall sockets connected in a loop to a 32-ampere breaker

# Sahaab

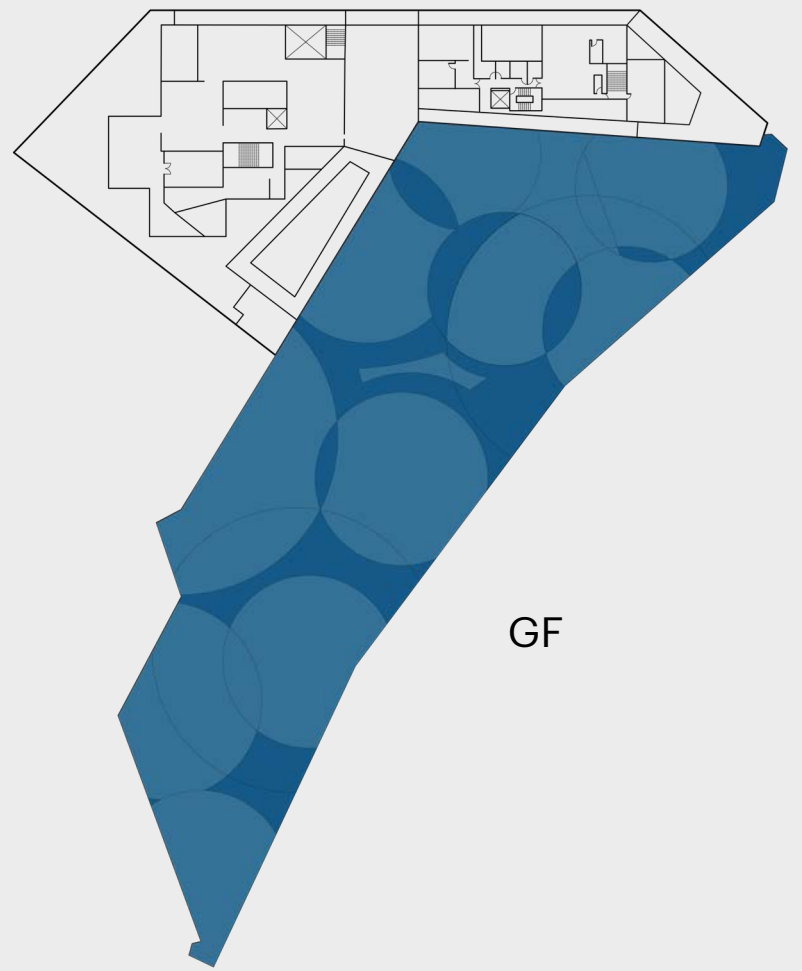




# Jaddaf Waterfront Sculpture Park

The Jaddaf Waterfront Sculpture Park features views of the Jaddaf Marina and an open-air amphitheatre.

The amphitheatre features ambient lighting with a built in stage and seating area, surrounded by sculptures. The open air theatre is great for performances, gala dinners, or welcome drinks before the main event. The amphitheatre has proximity and easy access to both Jameel Arts Centre and Teible entrances.



## Venue Rates

Hourly Rate **6,000 AED**

Half Day Rate **28,000 AED**

Full Day Rate **50,000 AED**

## Estimated Capacity

Venue Size **450 sqm\*\***

Standing Capacity **300\***

Seated Capacity **120\***

\* Capacity can be adjusted according to desired setup

\*\* Including stage and seating area



Equipped with

- 4 sockets connected in loop to a 20-ampere breaker





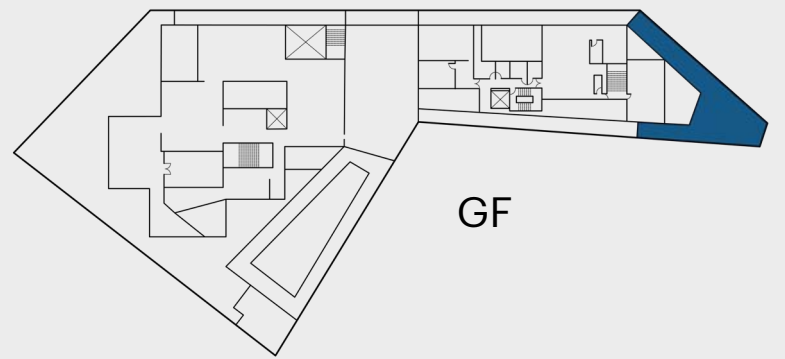
# Jaddaf Waterfront Sculpture Park



# Catering by Teible

Neatly nestled on the ground floor of Jameel Arts Centre in Dubai's Jaddaf Waterfront. Teible's acclaimed degustation experience presents a bespoke dining journey inspired by the farm-to-table philosophy. Incorporating fresh, seasonal ingredients sourced from small-scale farms and regional suppliers, Teible's carefully curated menus provide guests with an opportunity to truly understand and experience the best of what the UAE has to offer.

Teible offers bespoke catering services or can be privatised for events. With its farm-to-table philosophy, the MICHELIN Green Star restaurant offers a unique and seasonal culinary experience for guests in a one-of-a-kind location.



Contact [events@jameelartscentre.org](mailto:events@jameelartscentre.org) to request a customised catering package for your event



# Catering by Teible



# Available Services



# Available Services



Dedicated events team



In-house audio-visual and engineering support



24-hour venue security



24-hour facilities support



Private parking available



Complimentary guided tours of Jameel Arts Centre exhibitions



Corporate gift options available from Art Jameel Shop



Supporting documents for NOC's and permits



# Packages



## Photo and Film Shoots

The centre has a range of spaces that provide endless possibilities for photo and film shoots. Photo and film shoots are charged based on the duration and size of the crew.

### Photoshoots

Crew Size	Half Day Rate	Full Day Rate
15 and under pax	6,000 AED	10,000 AED
25 – 40 pax	7,000 AED	12,000 AED
Over 40 pax	11,000 AED	20,000 AED

### Film Shoots

Crew Size	Half Day Rate	Full Day Rate
15 and under pax	14,000 AED	25,000 AED
15 – 30 pax	16,000 AED	30,000 AED
30 – 45 pax	20,000 AED	40,000 AED
Over 40 pax	25,000 AED	50,000 AED

## Corporate Packages

Jameel Arts Centre provides an ideal location for meetings, seminars, conferences, networking events, holiday gatherings and banquets. The venue offers an inspirational space for experiencing, creating and thinking away from typical corporate environments.

Corporate packages start at **AED 3,000** and can be customised to include catering and gifts.

Contact [events@jameelartscentre.org](mailto:events@jameelartscentre.org) to request a package that suits your event

# Collaboration Terms





# Collaboration Terms

We are honoured that you have selected Jameel Arts Centre as your event venue. We strive to ensure you have a smooth event while we maintain a high quality experience for our museum visitors.

- 
- 1** Venue hire is limited to the locations listed in the brochure. Gallery spaces may only be used in exceptional circumstances and have additional charges.

---

  - 2** Any loud setup must be scheduled for outside Jameel Arts Centre opening hours.

---

  - 3** Privatisation of spaces can be considered outside of peak seasons and incurs an additional charge.

---

  - 4** Event organiser is responsible for arranging necessary permits and adhering to government guidelines for the events.

---

  - 5** Event concepts, designs, setup plans, decor and signage must be submitted for approval prior to event.

---

  - 6** Any collateral or social media posts, tags and handles will be agreed upon in advance by both parties.
-

# Contact

For more information  
contact [events@jameelartscentre.org](mailto:events@jameelartscentre.org)  
+971 4 873 9846

#jameelartscentre  
[jameelartscentre.org](http://jameelartscentre.org)

X  
@jameelartsctr

Instagram and Facebook  
@jameelartscentre